

Strathblane Heritage Website Prize Quiz

1. What is this lady's name?

Answer:



2. During WW2 what was "waterglass" used for? *Answer:*

3. What was John Coubrough's nickname? *Answer:*

4. Before the First World War, where did the "Village Parliament" meet?

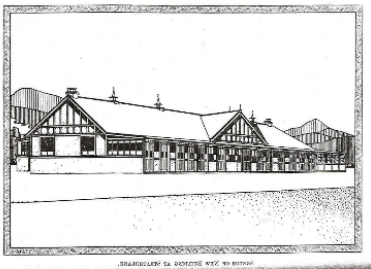
Answer:

5. Who wrote "Bonnie Blane, sweet, tiny river! Blessings be upon thee ever"?

Answer:

6. When was King Edward VII's official visit to Strathblane?

Answer:

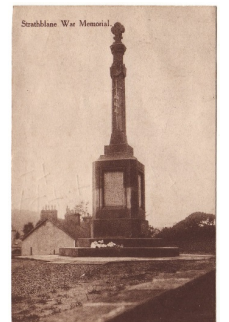


7. In which year did the Children's Home Hospital open in Strathblane?

Answer:

8. How many men feature on Strathblane War Memorial?

Answer:



9. Where is Lady Mary Stewart (1378-1457) buried?

Answer:

10. What was the name of the king slain during the Battle of Mugdock in 750AD?

Answer:

11. What was the name of the railway guard killed near Strathblane Station in 1884?

Answer:

RAILWAY ACCIDENT.—A railway accident, involving the death of two men and injury to four others, happened on the Blane Valley Railway, near Strathblane Station, early on Friday morning. Through a divergence of the Blane Water, a part of the embankment of a railway cutting was washed on to the line, and the 8.5 train from Glasgow to Blane Valley ran violently against the displaced mass.

12. In 1819 how many slaves were owned by Milliken Craig of Ballewan?

Answer:

13. When was the first 25-inch Ordnance Survey map featuring Strathblane published?

Answer:

14. Who owned the first umbrella to be seen in Strathblane?

Answer:

15. What was the contract price for Strathblane Parish Church, built in 1803?

Answer:

16. Who was the first pupil belted by Strathblane head teacher George Allan?

Answer:

17. When did Blanefield Thistle first win the Cameron Cup?

Answer:

18. When were the Dumgoyach standing stones erected according to carbon dating?

Answer:



19. How many prefabs were built in Strathblane after the Second World War?

Answer:

20. How many monumental inscriptions were recorded in Strathblane Parish Church, cemetery and churchyard in the most recent survey?

Answer:

Find all the answers somewhere on www.strathblaneheritage.org

Return your sheets with answers to Strathblane Library by 5pm on Friday 1 March.

A list of correct entries will be announced at the Strathblane Heritage AGM, 7.30pm Monday 18 March.

All correct entries will be entered into a draw for a £30 Voucher for Coffee at the Wilson's.

Name:

Contact No: